

# EVAPORATOR & SPRAY DRYER



**TAVRON**  
Engineers  
...Think cool





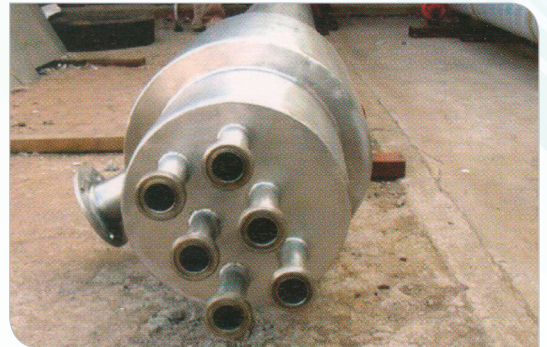


## ◀ CALENDRIA

- ❖ Tubes are of A 319 or ASTM 249.
- ❖ Shell will be of SS 304 / SS 316 / Carbon steel.
- ❖ Finished to Hygienic standard.
- ❖ Designed to achieve uniform wetting.

## EVAPORATOR ACCESSORIES ▶

- ❖ Pre heaters are of straight tubes.
- ❖ Pre heaters are designed to use the vapour of calendria for heating the inlet product.
- ❖ Excellent designed Vapour separator to avoid carry over.



## ◀ MULTI-PASS CALENDRIA

- ❖ The Calendria has been designed with Single pass and multi pass.
- ❖ The calendria for the food industry with the multi pass to avoid contamination.

## TRIPLE EFFECT EVAPORATOR IN ASSEMBLY ▶

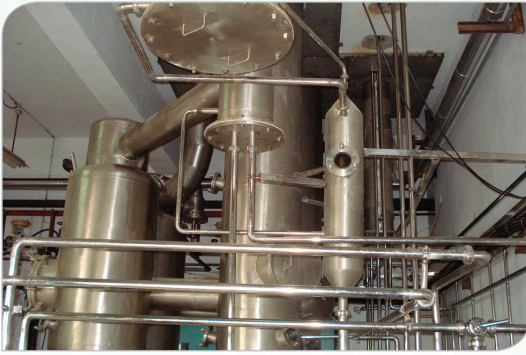
- ❖ Multi Effect and the steam consumption is to optimum.
- ❖ TVR or MVR as optional.
- ❖ Construction with SS 304/ SS 316.



## ◀ MULTIPLE EFFECT EVAPORATOR

- ❖ Falling film Evaporator.
- ❖ Raising Film Evaporator.
- ❖ Force Circulation Evaporator.
- ❖ Combination of falling film and force circulation Evaporator.



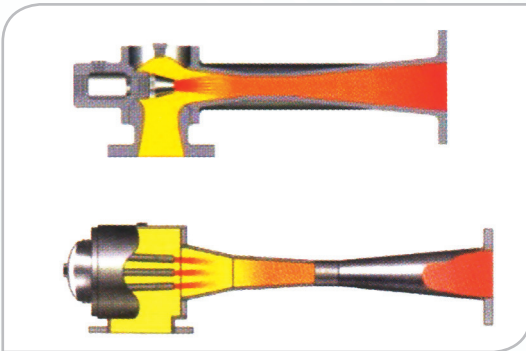


### ◀ INSTRUMENT AND CONTROLS

- ❖ Instrument to give the signal to the field mounted valves.
- ❖ Field mounted proportionate control valves to maintain the temperature and pressure.

### STRUCTURAL MOUNTED EVAPORATOR ▶

- ❖ Structural mounted Evaporator for the Industrial Application.
- ❖ Evaporator to concentrate the RO projects.
- ❖ Main Evaporator of SS 304 / SS 316.



### ◀ THERMAL VAPOUR RE-COMPRESSOR

- ❖ TVR with Single Nozzle.
- ❖ TVR with Multi Nozzle.
- ❖ Material of Construction SS 304 / SS 316 / Carbon Steel.
- ❖ Suction and Discharge of various connection to suit the operational condition.

### SPRAY DRYER ▶

- ❖ Capacity from 5 Kg / Hr Water Evaporation to 1500 Kg / Hr Water Evaporation.
- ❖ Available with Rotary Atomizer, Nozzle and two fluid system.
- ❖ Material of construction SS 304 / SS 316.
- ❖ Second stage drying with Vibro fluid Bed Dryer.
- ❖ Three Stage Drying with Stationery Fluid Bed and vibro fluid bed.
- ❖ Available with the hot air producing system of steam, Direct or Indirect oil fired, Thermic fluid etc.
- ❖ Closed Loop Dryer is available on request for special application.



### ◀ EFFICIENT CYCLONE SYSTEM

- ❖ Single / Multi Cyclone.
- ❖ For Efficient separation conveying air and product.
- ❖ Made out of SS 304 / SS 316 / Carbon steel.
- ❖ Additional Wet Scrubber and Bag filters are available to meet the local pollution standard.





### ◀ LAB MODEL SPRAY DRYER

- ❖ Capacity from 2 to 25 Kg / Hr Water Evaporation.
- ❖ Highly suitable for R&D and Education institution.
- ❖ Heating with Electrical Heater with other heating on option.
- ❖ Complete Auto control.
- ❖ Available with PLC control.

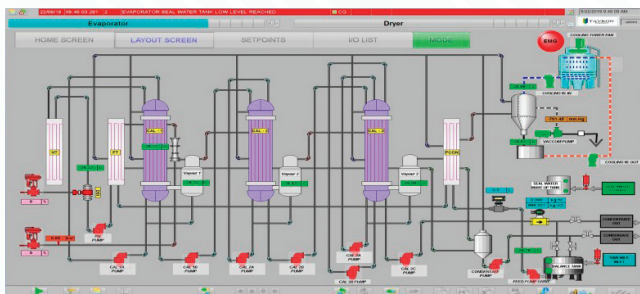
### VIBRO FLUID BED ▶

- ❖ Material of construction SS 304 / SS 316.
- ❖ Well designed Coni form hole bed sheet
- ❖ Supported on spring loaded SS / MS legs.
- ❖ Easy removal for the Inspection of the product.



### FALLING FILM EVAPORATOR SCADA

- ❖ Material SCADA systems at their fundamental level are Industrial Control Systems. They are computer based control systems that monitor and control industrial processes that exist in the physical world.
- ❖ They are the best control method for processes that have large amounts of data that need gathering and analyzing, or are spread over large distances, or require critical control in fast paced processes.
- ❖ We provide fully automated SCADA based system for efficient plant operation.
- ❖ We have worked on various projects where SCADA software's are required.



We use SCADA Platform of Siemens WinCC, AB Factory Talk View, InTouch Wonderware.



HEAD OFFICE

**TAVRON ENGINEERS**

AF-1 Aiswariyam, 25 A Redhills Road, Kolathur, Chennai - 600 099, India.

Tel:- +91 44 25567211. Mobile : +91 9444015442.

Email:- sales@tavron.net| Website: www.tavron.net



FACTORY

**TAVRON ENGINEERS**

38-42 Arulmurugan Nagar, Vichoor Post, Manali New Town, Chennai - 600 103.

Tel: +91 9176610727. Email: factory@tavron.net