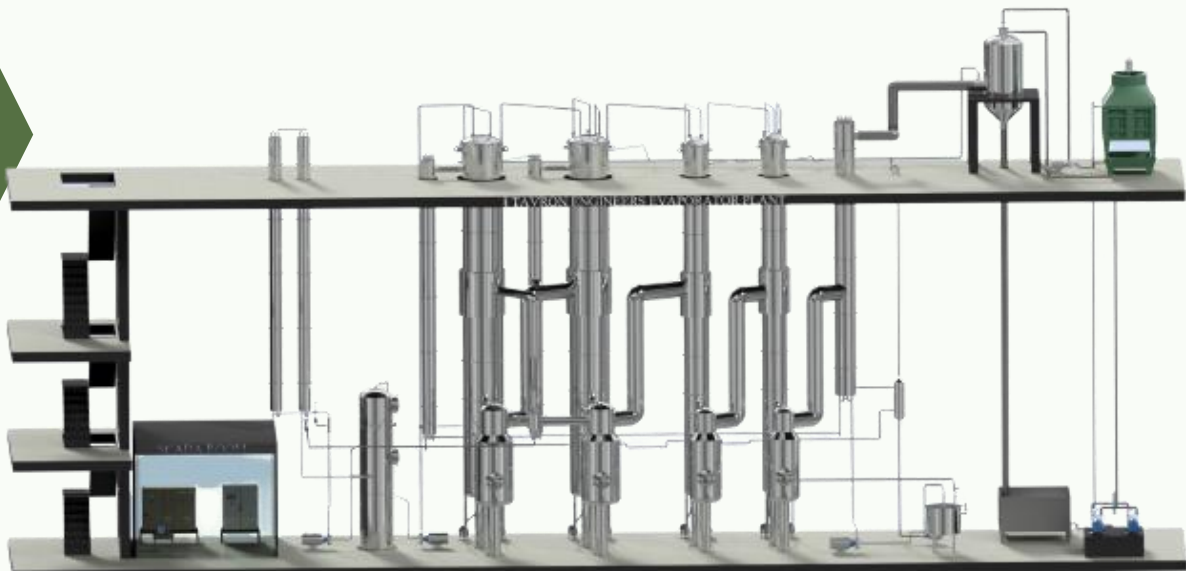
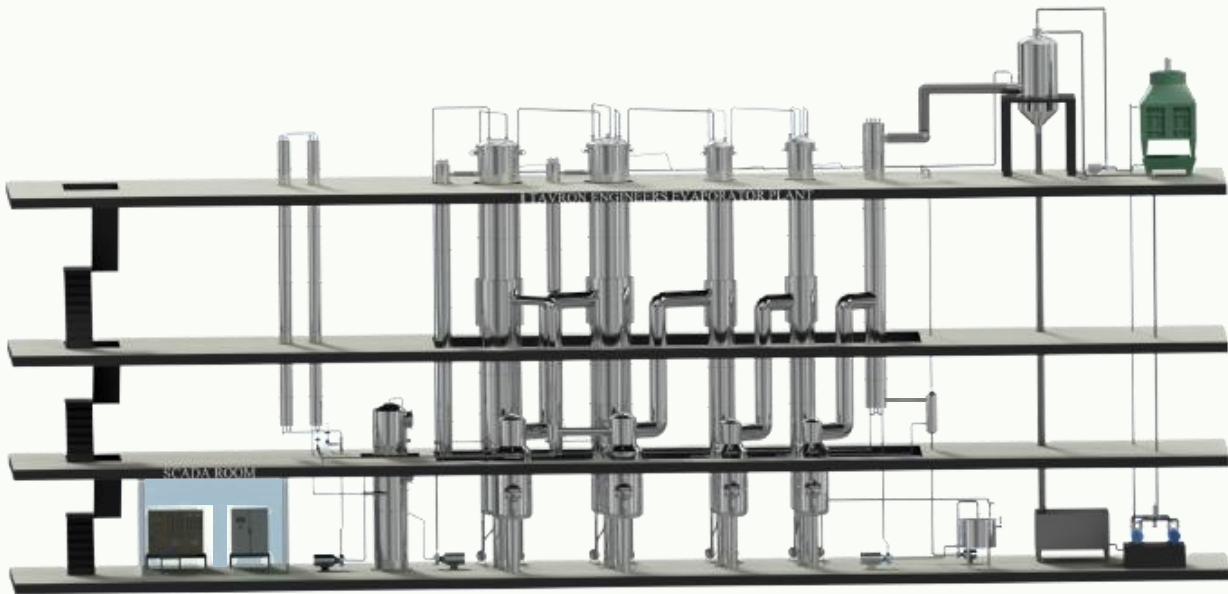
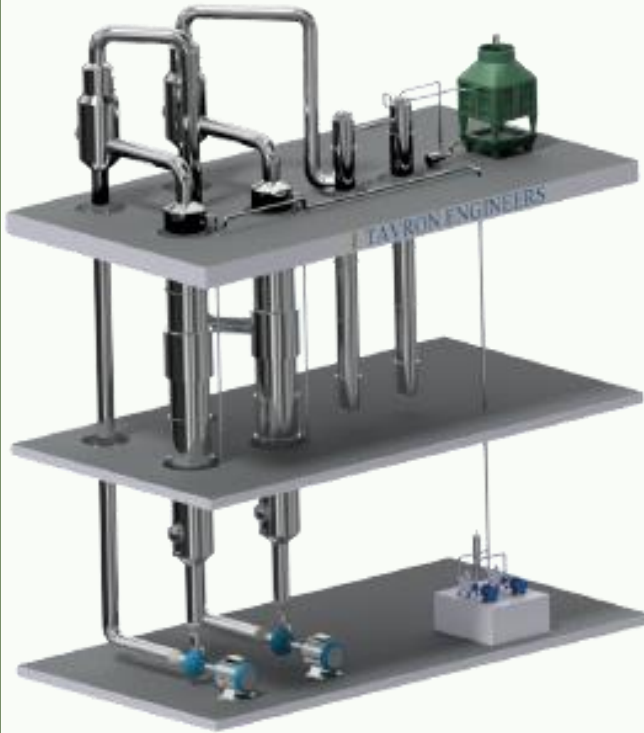


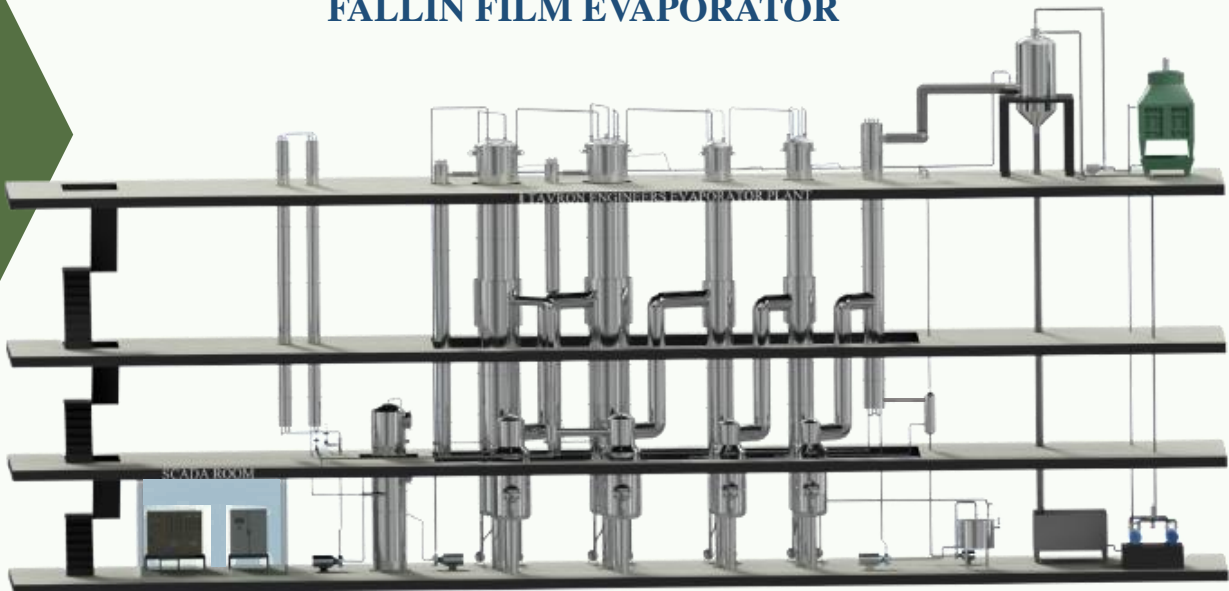
EVAPORATOR PLANT



FORCED CIRCULATION EVAPORATOR



FALLIN FILM EVAPORATOR



CALANDRIA

- Tubes are of A 319 or ASTM A 249.
- Shell will be of SS 304 / SS 316 / Carbon steel.
- Finished to Hygienic standard.
- Designed to achieve uniform wetting.



EVAPORATOR ACCESSORIES

- Pre heaters are of straight tubes.
- Pre heaters are designed to use the vapour of calandria for heating the inlet product.
- Excellent designed Vapour separator to avoid carry over.

MULTI-PASS CALANDRIA

- The Calandria has been designed with Single pass and multi pass.
- The calandria for the food industry with the multi pass to avoid contamination.



TRIPLE EFFECT EVAPORATOR IN ASSEMBLY

- Multi Effect and the steam consumption is to optimum.
- TVR or MVR as optional.
- Construction with SS 304/ SS 316.

MULTIPLE EFFECT EVAPORATOR

- Falling film Evaporator.
- Raising Film Evaporator.
- Force Circulation Evaporator.
- Combination of falling film and force circulation Evaporator.



INSTRUMENT AND CONTROLS

- Instrument to give the signal to the field mounted valves.
- Field mounted proportionate control valves to maintain the temperature and pressure.

STRUCTURAL MOUNTED EVAPORATOR

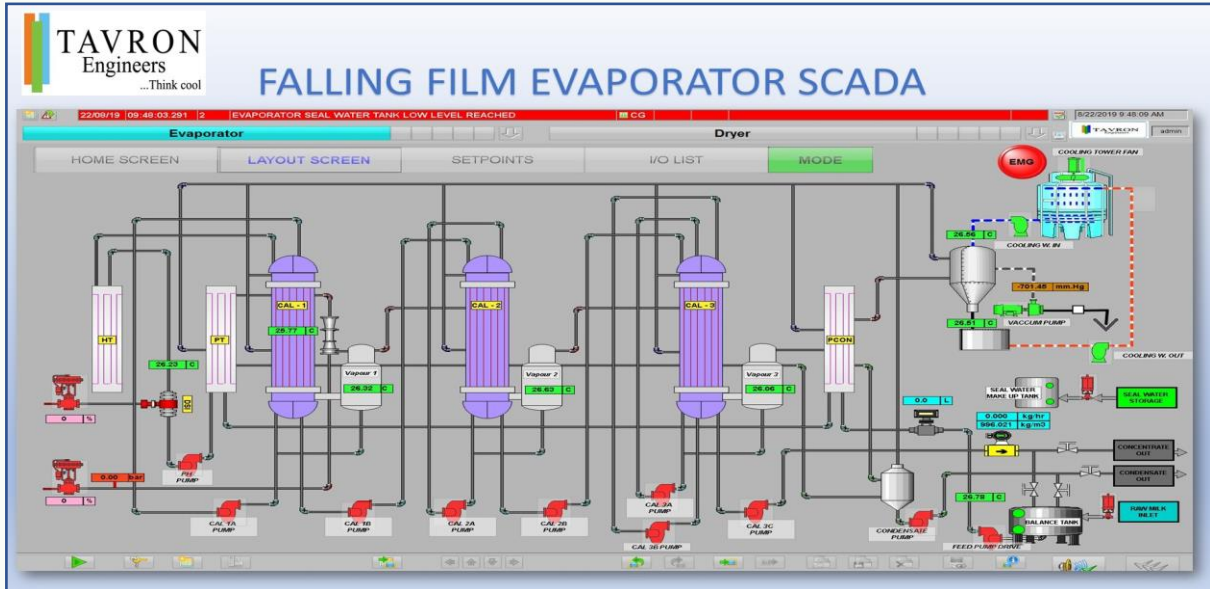
- Structural mounted Evaporator for the Industrial Application.
- Evaporator to concentrate the RO projects.
- Main Evaporator of SS 304 / SS 316.



THERMAL VAPOUR RE-COMPRESSOR

- TVR with Multi Nozzle.
- TVR with Single Nozzle.
- Material of Construction SS 304 / SS 316 / Carbon Steel.
- Suction and Discharge of various connection to suit the operational condition.

SCADA SCREEN



HEAD OFFICE

TAVRON ENGINEERS

AF-1 Aiswariyam, 25 A Redhills Road, Kolathur,
Chennai - 600 099, India.

Tel:- +91 44 25567211. Mobile : +91 9444015442.

Email:- sales@tavron.net | Website: www.tavron.net



FACTORY

TAVRON ENGINEERS

38-42 Arulmurugan Nagar, Vichoor Post,
Manali New Town, Chennai - 600 103.

Tel: +91 9176610727. Email: factory@tavron.net