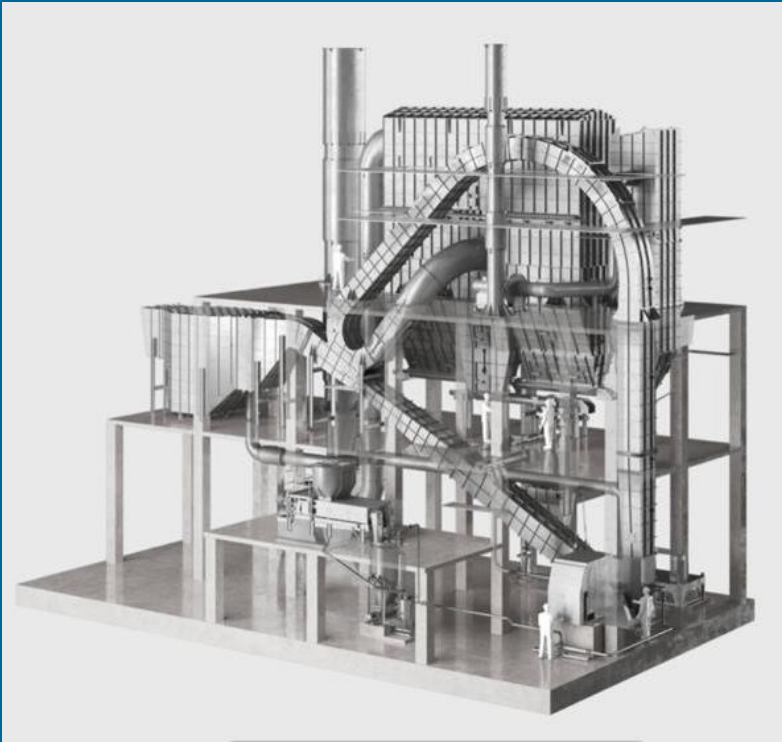


CASEIN & WHEY PROCESSING PLANT



TAVRON
Engineers
...Think cool



Email: sales@tavron.net

Whatsapp: +91 9444015442

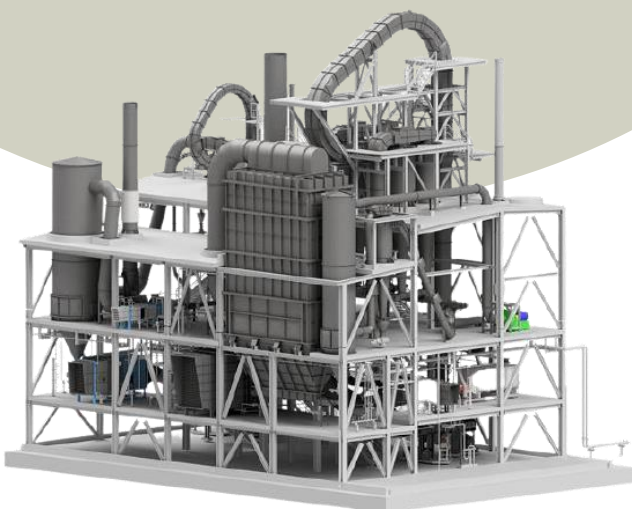
www.tavron.net

Wet casein line



- Capacity from 5000 LPH of skim milk Handling to 50,000 LPH.
- Online Heating and Chemical dosing for the coagulation.
- Construction with SS 304 and SS 316
- CIP cleanable system

Ring dryer



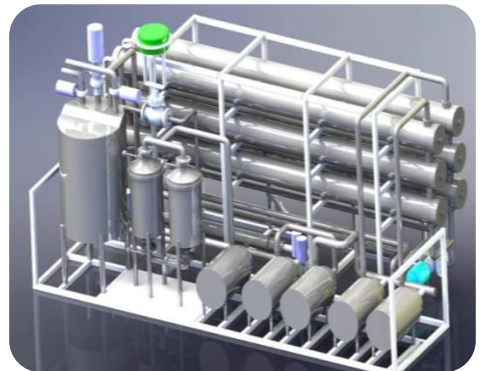
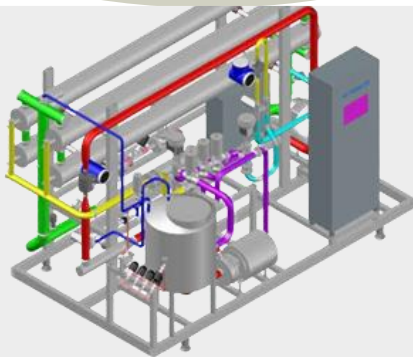
- Ring Dryer will be designed with 150 Kgs -Hr water Evaporation onward
- Well and balance designed Disintegrator to have smooth running
- State of art manifold for the recycling operation
- Designed with SS 304 and SS 316

Decanters

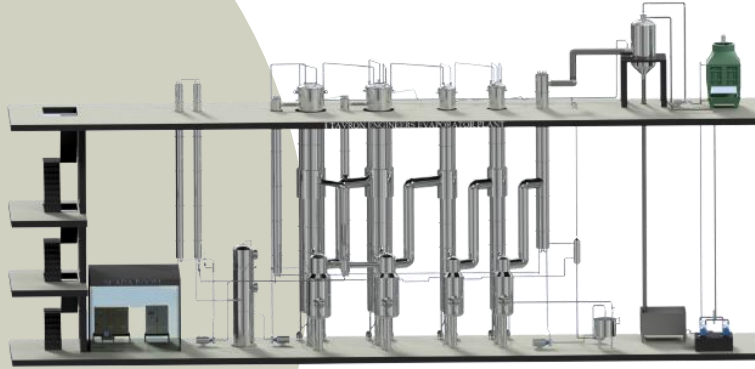


Whey Filtration System

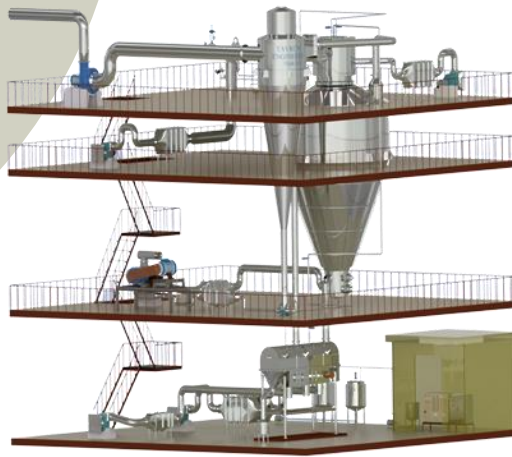
- *Micro filtration system*
- *Nano filtration system*
- *Ultra filtration system*
- *Ro filtration*



FALLING FILM EVAPORATOR



SPRAY DRYER



- Capacity from 5 Kg / Hr Water Evaporation to 1500 Kg / Hr Water Evaporation.
- Available with Rotary Atomizer, Nozzle and two fluid system.
- Material of construction SS 304 / SS 316.
- Second stage drying with Vibro fluid Bed Dryer.
- Three Stage Drying with Stationery Fluid Bed and vibro fluid bed.
- Available with the hot air producing system of steam, Direct or Indirect oil fired, Thermic fluid etc.
- Closed Loop Dryer is available on request for special application

HEAD OFFICE TAVRON ENGINEERS

AF-1 Aiswariyam, 25 A Redhills Road,
Kolathur, Chennai - 600 099, India.

Tel:- +91 44 25567211.

Mobile : +91 9444015442.

Email:- sales@tavron.net

Website: www.tavron.net

FACTORY TAVRON ENGINEERS

38-42 Arulmurugan Nagar,
Vichoor Post,

Manali New Town,
Chennai - 600 103.

Tel: +91 9176610727.

Email: factory@tavron.net