



Evaporator & Spray Dryer





Calendria

- ❖ Tubes are of A 319 or ASTM A 249
- ❖ Shell will be of SS 304 / SS 316 / Carbon steel
- ❖ Finished to the Hygienic standard.
- ❖ Designed to achieve uniform wetting.



Evaporator Accessories

- ❖ Pre heaters are of Straight tubes.
- ❖ Pre heaters are designed to use the vapour of the calendria for heating the inlet product.
- ❖ Excellent designed Vapour separator to avoid carryover.



Triple Effect Evaporator in Assembly

- ❖ Multi effect and the steam consumption is to the optimum
- ❖ TVR or MVR as optional.
- ❖ Construction with SS 304 / SS 316

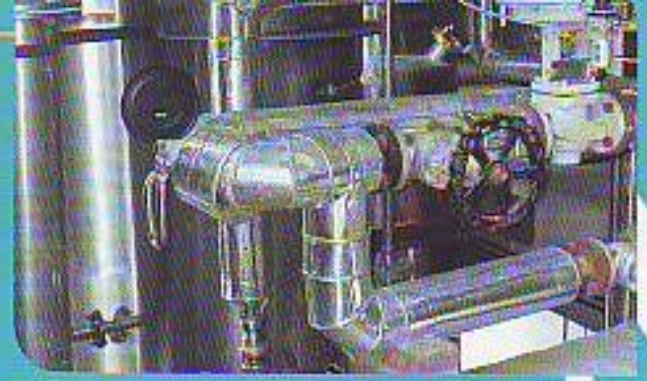


Multiple Effect Evaporator

- ❖ Falling film evaporator
- ❖ Raising film evaporator
- ❖ Force circulation evaporator
- ❖ Combination of falling film and force

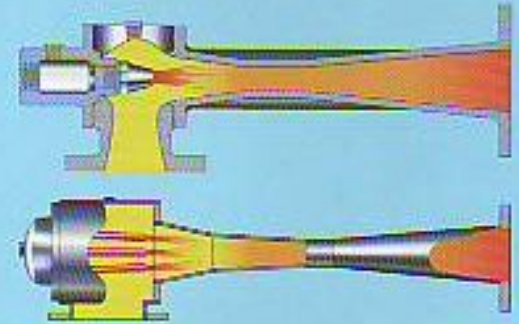
Instrument and controls

- ❖ Instrumentation to give the signal to the field mounted valves
- ❖ Field mounted proportionate control valves to maintain the temperature and pressure.



Thermal Vapour Re-Compressor

- ❖ TVR with Single Nozzle.
- ❖ TVR with Multi Nozzle.
- ❖ Material of Construction SS 304 / SS 316 / Carbon steel.
- ❖ Suction and Discharge of various connection to suit the operational condition.



Spray Dyer

- ❖ Capacity From 5 Kg / Hr Water Evaporation to 1500 Kg / Hr Water Evaporation
- ❖ Available with Rotary atomizer, Nozzle and two fluid system.
- ❖ Material of construction SS 304 / SS 316 .
- ❖ Second stage drying with the Vibro Fluid bed dryer.
- ❖ Available with the hot water with steam radiation , Direct or Indirect oil fired, Thermic fluid etc.,
- ❖ Closed Loop dryer is available on request for special application.



Lab Model Spray Dryer

- ❖ Capacity from 2 to 10 Kg / Hr Water Evaporation
- ❖ Highly suitable for R& D and Education institution.
- ❖ Heating with the Electrical heater.
- ❖ Complete auto control.



Powder Separation

- ❖ Powder Separation with the cyclone separator.
- ❖ Additional Wet scrubber and Bag filters are available to meet the local pollution standard.
- ❖ Construction SS 304 / SS 316 / Carbon steel.



Butter Churn

- ❖ Butter Churn From 50 L to 5000 L
- ❖ Smooth Drive with Direct Coupling
- ❖ Speed reduction with reputed make AC Drives
- ❖ Cleaning with CIP system.
- ❖ Working under Vacuum to achieve the best moisture control.



Ghee Making Kettles

- ❖ Various Capacity from 50 L to 5000 L
- ❖ Used with the steam pressure of 3 Bar.
- ❖ User friendly and better boiling.
- ❖ Material of construction SS 304 / SS 316
- ❖ Can be used for the similar application for the related product.



Process Kettle

- ❖ Used for Heating and cooling of the Liquid.
- ❖ Highly suitable for Milk , cream, Tomato paste etc.
- ❖ Material of construction with SS 304 / SS 316.
- ❖ Agitator with reduction gear box and AC Drive on Optional.

